

water. A fair rate for non-potable water has to incorporate these facts, Wadsworth said. Some costs are recovered only from non-potable customers, some only from potable customers, and some are recovered from both, according to Wadsworth.

In the past, non-potable water has been considered as an integrated part of the overall system, Wadsworth said, because the same wells were used to source both potable and non-potable water.

The “peaking factor”—a customer’s maximum monthly consumption divided by that customer’s average monthly consumption—has also been included

in the cost calculation for non-potable water, according to Wadsworth, because it influences the capacity, and therefore the cost, of delivery lines, pumps, and so forth.

At the end of the discussion, in light of the fact that non-potable customers do not contribute to water delivery peaks to the same degree potable customers do, the board decided to remove peaking factor charges from the rates for non-potable water, and reevaluate the rate in a year.

Hearing held on 2019 budget

The board heard a presentation of the second draft of the budget for 2019. A vote to ap-

prove the final budget will be held at the December board meeting.

Estimated revenues from the preliminary budget:

- \$1.565 million in tap fees
- \$3.1 million in use fees
- \$1.494 million in sewer fees
- \$8.8 million in total revenues

Estimated expenditures from the preliminary budget:

- \$2.94 million in construction costs
- \$8.7 million in total expenditures

The preliminary budget estimates the district’s reserve funds to be \$27.5 million.

The public may review and comment on this draft of the budget before Dec. 10.

I-25 GAP project to protect wildlife

The board got an update from Sarah Zarzecki of Stanley Consultants, the com-

pany managing the portion of the Interstate 25 GAP project between Castle Rock and Monument.

Zarzecki said the work will include animal crossings intended to help wildlife cross the expanded I-25 highway safely. The animal crossing north of Monument Hill requires an existing sewer line to be relocated and suspended under the bridge over the highway, Zarzecki said, adding that the Colorado Department of Transportation will pay for this work, which was 90 percent planned at the time of the board meeting.

Zarzecki also said 18 miles of deer fence would be built between Monument Hill and Castle Rock that would guide wildlife to the safe crossing points.

Board approves two supplemental water

service requests

The board voted to approve supplemental water requests for Cipriani LLC and Monument Hill Business Park LLC. Cipriani LLC wants to add a building, potentially to be used as a restaurant, at its property on Cipriani Loop. Monument Hill Business Park LLC plans to construct an office building on Deer Creek Road, adjacent to the storage facility at that location.

The next meeting is scheduled for 1 p.m. Dec. 10. Meetings are usually held at the district office at 1845 Woodmoor Drive on the second Monday of each month at 1 p.m. See www.woodmoorwater.com or call 488-2525 to verify meeting times.

James Howald
can be reached at
jameshowald@ocn.me.

Triview Metropolitan District, Nov. 13

Priority to connect with CSU wastewater pipeline grows

By Jennifer Kaylor

At its Nov. 13 meeting, the Triview Metropolitan District Board of Directors discussed the many positive aspects of participating in possible wastewater regionalization with Colorado Springs Utilities (CSU). District Manager Jim McGrady updated the directors on the district’s bond resolution rating and general operations.

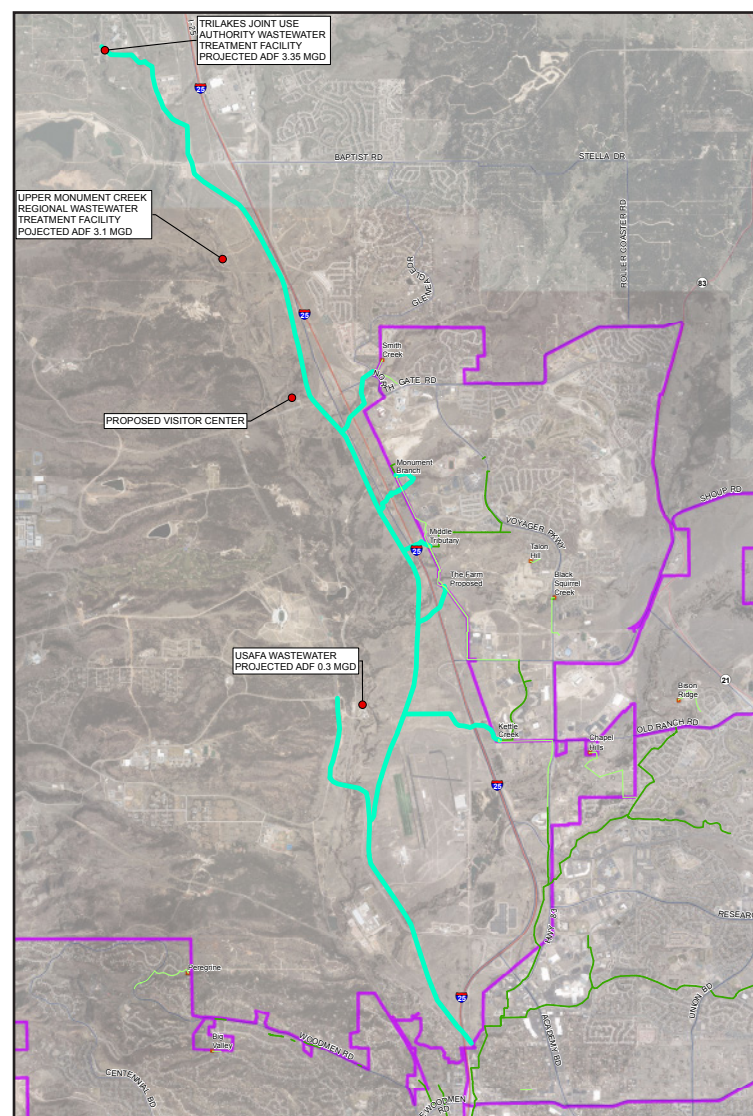
Triview is a Title 32 special district inside Monument that provides road, landscaping, open space maintenance, and water and wastewater services to Jackson Creek, Promontory Pointe, Sanctuary Pointe, and several commercial areas. The Town of Monument provides land use planning, police, and general governance for Triview’s property owners. Triview Metropolitan District is not to be confused with Triview no. 2, Triview no. 3, or Triview no. 4, which were created solely to pay for road bonds in Promontory Pointe, Home Place Ranch, and Sanctuary Pointe, respectively. The Nov. 13 board packet and agenda are available at <https://triviewmetro.com/boardDocuments>.

Wastewater regionalization: A potential win for many

CSU plans to construct an interceptor called the North Monument Creek Interceptor (NMCI) that would join with and provide services for the U.S. Air Force Academy’s proposed new visitor center and continue north to the Upper Monument Creek Wastewater Treatment Facility (UMCRWWTF) that is jointly owned by the Triview, Donala Water and Sanitation, and Forest Lakes Met-

ropolitan District (FLMD). The pipeline would then be

extended to the Tri-Lakes Wastewater Treatment Fa-



Above: Colorado Springs Utilities (CSU) has proposed a plan to build a North Monument Creek Interceptor (NMCI) (shown in green) to potentially regionalize wastewater treatment with the U.S. Air Force Academy (AFA) and northern El Paso County wastewater districts. If the academy opts to participate, the NMCI would initially connect the treatment facility intended to service the AFA’s new visitors center complex to the high-capacity J.D. Phillips Water Reclamation Facility. A second phase would extend NMCI infrastructure from the AFA treatment facility to northern sanitation districts via the Upper Monument Creek Regional Wastewater Treatment Facility. The proposed gravity-based system has the potential to eliminate lift stations along its 13-mile length, incorporate economy of scale in addressing regulation compliance, create numerous efficiencies for participating entities, and generate additional revenue for CSU. NMCI construction is expected to begin in 2020. See PDF pages 82 and 83 of Board Packet, Regular Meeting, 11/13/2018 at <https://triviewmetro.com/boardDocuments> for a CSU synopsis of the NMCI project. *Diagram courtesy of the Triview district.*

CONGRATULATIONS! EMMA J. HATFIELD

BACHELOR OF SCIENCE
IN BUSINESS ADMINISTRATION
DOUBLE EMPHASIS IN MARKETING
AND MANAGEMENT
MONFORT COLLEGE OF BUSINESS
UNIVERSITY OF NORTHERN
COLORADO 2018



*We are so proud of you and your achievements at UNC.
You are a beautiful Child of God.*

*We love you and wish you all the best with the next step
finding a job in northern Colorado....*

Love, Mom and Dad

(and L. Dow and Diana Nichol; Elena Nichol; Jenny, Ken and Leah Horsey; Roger and Karen Hatfield; Becky, Alan, Jeremy and Hannah Hoesly; Elizabeth M. Nichol, all your great-grandparents who love you so much, and all your Tri-Lakes area friends, Lewis-Palmer teachers, and Tri-Lakes United Methodist Church family who keep cheering for you and wish for your continued success.)

LisaHatfield@ocn.me

Come Home for Christmas at The Church at Woodmoor!

Sun., Dec. 2, 10 am: 1st Sunday of Advent,
Hanging of the Greens

Sun., Dec. 9, 10 am: Chancel Choir Cantata,
Nativity by Mark Hayes

Mon., Dec. 10, 5 pm: A Christmas
Gathering—Dinner and program,
Colorado Springs Children’s Chorale at
Woodmoor Country Club (by reservation)

Sun., Dec. 16, 10 am: Children’s Pageant

Sun., Dec. 23, 10 am: Communion Sunday

Mon., Dec. 24: Christmas Eve Services -
3 pm (children/family), 5 pm (traditional candlelight)

Sun., Dec. 30, 10 am: Christmas Sweater/
PJ Sunday, special music by Nichole Nordeman,
Christian singer/songwriter

The Church at Woodmoor

18125 Furrow Road (at Hwy 105)

(719) 488-3200 • www.thechurchatwoodmoor.com

