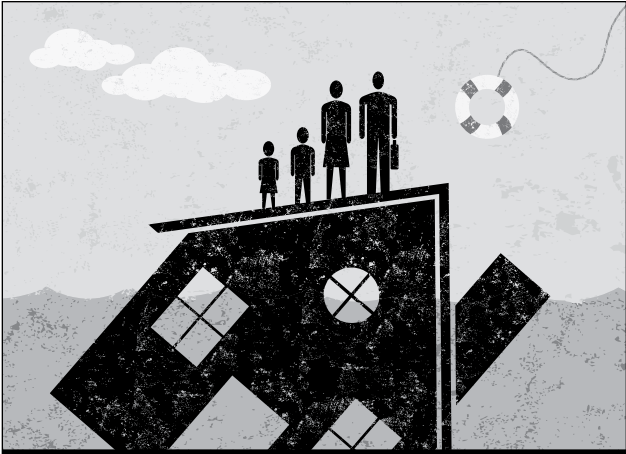


eliminating the need to physically shift the large sludge collection dumpsters.



## IS YOUR MORTGAGE UNDERWATER?

As of Nov 1, 2012 new debt relief laws:

- 1) You do **NOT** have to be late on payments to execute a short sale.
- 2) You can execute a short sale and walk away **without** a deficiency or promissory note to repay.

This will affect 50% of all US loans. **In Monument a majority of loans fall into this category.**

If you think your home is upside-down or if you want to know if your loan qualifies, please **call today (719-209-1793)** for a no obligation, confidential consultation.

**April Falk**, Sell State Realty  
Licensed Real Estate Agent  
Accredited Short Sale  
Negotiator (ASN)  
[april@aprilfalk.com](mailto:april@aprilfalk.com)  
719-209-1793



## Conservation update

Duthie reported that Donala had exceeded its annual record for water production (2011) on Oct. 13. There were 25 customers that used more than 40,000 gallons in September, bringing the total number of billings for more than 40,000 gallons up to 435 for the year. Most of these are for habitual high users. Donala produced 41 million gallons of water in September, 7 million more than in September 2011.

Three customers were selected as winners in the first annual Donala xeriscape contest based on water savings and aesthetics. Susan McLean, the district's conservation/landscape manager, provided OCN with this information and the photos shown on pages 1 and 29:

- Third place—290 Wuthering Heights Drive: The lawn was downsized and water-wise trees, shrubs, and grasses, as well as organic and rock mulches, were installed. The irrigation system was rerouted and old sprinkler heads were replaced with new ones, achieving a 42 percent irrigation savings over last season before the improvements were made. The prize was free water for October.
- Second place—15025 La Jolla Place: About three years ago, a significant amount of bluegrass sod was removed and replaced with a dry stream bed, gorilla hair mulch, and native drought-resistant grasses and plants as aesthetic features in the area surrounding the home. This landscape has saved 34 percent of the water formerly used to irrigate a bluegrass-dominated yard. This address won free water in October and November as the prize.
- First place—440 Avocet Loop: The unusual front yard landscape consists of a gravel berm bisected by a dry stream bed, ornamented with xeric plantings. A low privacy fence and a shade structure along with flowers and trees enhance the side/back yards, creating a virtual outdoor room for the family to enjoy. The landscape is irrigated by a drip system. The conversion from traditional landscape to xeriscape saved 73 percent of the water previously used to irrigate the grounds. This address was awarded free water for October, November, and December.

Duthie discussed a table of how operational water depths over the pumps vary for various Donala wells. The information will be finalized and posted on the Donala

website. As some of the deeper wells become slower to recharge, lower pumping rates have to be used. Pumps designed to pump 500 gallons per minute are not as efficient if slowed to pump at lower rates. The time it takes for a static well recovery after high pumping rates is increasing. The recovery time required to resume pumping after operational depths decrease too much also is increasing. Two wells recently shut down automatically because the depth over the pump dropped too low.

Leonard-Rice is providing the district's hydrology services. The state water engineer is publishing similar well data showing the same reduced ability for utility wells to recharge.

Donala is supplementing its groundwater production with renewable water from the Willow Creek Ranch, Pueblo Board of Water Works, and Colorado Springs Utilities, but this water is more expensive than treating Donala's own well water. While Donala would prefer to use all 280 acre-feet of its annual Willow Creek adjudicated water rights, it was only able to use 123 acre-feet.

## 2013 budget review

Duthie gave an in-depth presentation very similar to his Sept. 20 board meeting presentation on his 2013 budget and his 10-year projection of needed for water and wastewater rate increases. He spoke to the citizens in attendance and answered all their questions on assumptions and choices made to increase rates. This information is available in the OCN article on the Sept. 20 meeting.

Duthie and several board members had a discussion with Evelo regarding fee increases in 2013 for the Gleneagle Golf Course, which uses about 9 percent of Donala's water production.

The board unanimously approved the draft 2013 budget for presentation at a public hearing during the next board meeting on Dec. 6.

The board went into executive session for personnel and negotiating strategies at 2:45 p.m.

\*\*\*\*\*

The next meeting will be held at 1:30 p.m. on Dec. 6 at the Donala office, 15850 Holbein Drive. Meetings are normally held at 1:30 p.m. on the third Thursday of each month; however, no meeting will be held in November. Information: 488-3603.

The district's website is at [www.donalawater.org](http://www.donalawater.org).  
*Jim Kendrick can be reached at [jimkendrick@ocn.me](mailto:jimkendrick@ocn.me).*

## Weekend Open House in Walden Preserve Nov. 10, 11, 17, and 18: 1 to 4 p.m.



### 17855 Pioneer Crossing - \$450,000

Great views! Cul-de-sac location!

3700 sq. ft. walk-out rancher

4br, 3ba, 3-car on half-acre site, beautifully landscaped

Hand-textured walls. Vaulted ceilings

Spacious bedrooms all have walk-in closets

Main-level master and guest bedrooms

Access maintenance-free deck with stone columns from great room, kitchen and master bedroom.

Huge rec room with bar/entertainment area

Customize and build on your personally-selected lot at great prices!

Easily expands to more than 4000 sq. ft.

Build with a quality, small-volume, hands-on builder, and save!



**Bev Giltner**  
Broker Associate  
(719) 360-8873  
(719) 442-1525  
[realsales.bev@gmail.com](mailto:realsales.bev@gmail.com)



## Lewis-Palmer District 38 Board of Education, Oct. 18

# Board acknowledges grants from Tri-Lakes Women's Club; sees progress on food service

By Harriet Halbig

On Oct. 18, the Lewis-Palmer Board of Education expressed its appreciation to the Tri-Lakes Women's Club for \$18,623 in awards made to the district. The awards were selected in May and were to be spent by September.

Projects supported by the awards included the purchase of an equine therapy program for the Adapted Physical Education Department, various technology and sports equipment, and new stage curtains for Lewis-Palmer Elementary.

Superintendent John Borman formally thanked the club for its support and commended it as a prime example of community involvement and support for the schools.

Board President Jeff Ferguson presented a plaque to the grants chairperson and officers of the club, and recipients of the awards were also present.

## Nutritional Services update

Katie Dubois, manager of the district's Nutritional Services Department, gave an update on the progress of the department's participation in the National School Breakfast and Lunch Program, which was substantially changed at the end of the 2011-12 school year. Dubois said that food service revenues for the department exceeded those of last year for the first three months of the school year and that there are significant sales of a la carte items. Students may have as many fruits and vegetables as they wish, but servings of proteins and starches are restricted, as is sodium content.

When asked by the board what the consequences would be for not participating in the federal program, Du-



**Above:** Board of Education President Jeff Ferguson presents a plaque to members of the Tri-Lakes Women's Club. They are, from left, Sandi Liston (Grants chairperson), Donna Wagner, and Mary Mills (co-presidents). *Photo by Harriet Halbig.*

bois said that the district would lose its funding for free and reduced-cost lunches and several thousand dollars worth of commodities. The number of students participating in the free/reduced-cost lunch program continues to grow. She therefore recommended that the district continue with the program. The department is continuously creating new recipes and tracking their appeal to