

Special Events and Notices

By Judy Barnes, Events Editor

Although we strive for accuracy in these listings, dates or times are often changed after publication. Please double-check the time and place of any event you wish to attend by calling the info number for that event.

Wednesday Senior Lunch at Big Red

- June 5:** Roast pork, applesauce, & roasted potatoes.
- June 12:** BBQ pork sandwich, potato salad, & pickle.
- June 19:** Chicken Caesar salad, & garlic bread.
- June 26:** Brisket, garlic mashed potatoes, & salad.
- July 3:** NO LUNCH

Rolls and butter are served with each meal except sandwiches. Dessert is also provided.

An activity of Tri-Lakes Health Advocacy Partnership. Meals are provided by Pinecrest Catering, Palmer Lake; Nikki McDonald, executive chef, 481-3307.

Slash-Mulch season underway

The El Paso County Black Forest Slash and Mulch season is here! Slash (tree and brush debris only) will be accepted until **Sept. 15**. Mulch will be available until **Sept. 28** or when mulch runs out. Hours of operation are: Saturdays, 7 a.m.-4 p.m.; Sundays, noon-4 p.m.; Tuesday and Thursday evenings, 5-7:30 p.m. The mulch loader schedule is Saturdays only, 7 a.m.-4 p.m. The loader fee is \$5 per bucket, about 2 cubic yards. The slash and mulch site is located at the southeast corner of Shoup and Hering Roads in the Black Forest area.

The program is a wildfire mitigation and recycling effort sponsored by El Paso County, co-sponsored by the Colorado Forestry Association and the Black Forest Fire Department, in cooperation with Colorado State Forest Service and the State Board of Land Commissioners.

The program's purpose is to teach forest management practices and to encourage residents to clear adequate defensible space surrounding their structures by thinning trees and shrubs to reduce the spread of fire. Spreading mulch on the forest floor holds moisture, delays the spread of weeds, and provides nutrients to the forest. For more information visit bflash.org or call Ruth Ann Steele 495-3107, Carolyn Brown, 495-3127, Jeff DeWitt, 495-8024, or the county Environmental Division, 520-7878.

Walking tours with local historian/filmmaker Jim Sawatzki

Walk in the footsteps of early Monument pioneers. Stroll through Old Town Palmer Lake or visit the Chautauqua grounds and cottages in Glen Park. Journey north to neighboring picturesque Castle Rock. Each tour is 1 1/2 hours. For details, call 481-3963 or visit www.palmerdivi.deproductions.com.

Volunteers needed for El Paso County Board of Adjustment, apply by June 14

The El Paso County Board of Commissioners seeks community-minded citizen volunteers to serve as associate members on the Board of Adjustment. Applications are due by **June 14**. The Board of Adjustment hears and decides on issues of physical variances related to the county zoning code. Applications are located at www.elpasoco.com. Click on the "Volunteer Boards" link. For more information, call 520-6436.

Volunteer needed for county Community Corrections Board, Apply by June 21

The El Paso County Board of Commissioners is seeking a community-minded citizen volunteer to serve as

an at-large representative to the Community Corrections Board (CCB). Applications are due by **June 21**. The CCB advises the commissioners on community-based and community-oriented programs that provide supervision of offenders being diverted from prison and those transitioning back into the community after prison. The volunteer application is located at www.elpasoco.com. Click on the "Volunteer Boards" link. For more information, call 520-6436.

Monument Hill Foundation accepting grant applications, apply by June 30

The Monument Hill Foundation invites community-oriented organizations in the Tri-Lakes region to submit grant requests by **June 30** for the October 2013-September 2014 granting year. Request forms can be obtained from the foundation's website at www.MonumentHillFoundation.org or by sending an email request to Granting@MonumentHillFoundation.org. The foundation is the granting arm of the Monument Hill Kiwanis Club. Its mission is to provide financial support to the Tri-Lakes community of northern El Paso County and its youths. In 2012-13 the foundation approved giving out \$40,000 to 26 recipient organizations and expects to give out a similar amount for the 2013-14 granting cycle. Grant recipients have included District 38 special needs children, Tri-Lakes Center for the Arts, the District 38 Robotics Team, the Rocky Mountain Youth Leadership Conference, and the Emily Griffith Center. For more information, visit www.MonumentHillFoundation.org or email Scott@rosses.me.

Tri-Lakes Women's Club upholds tradition

As the Tri-Lakes Women's Club (TLWC) funding year comes to a close the club is proud to award \$68,000 in grants to many of our community's non-profit and public service organizations and public schools. Outgoing co-president Donna Wagner notes that this is the largest amount the club has given in grants in a single year. All this is possible with the dedication and commitment of the club's 235 members who volunteer many hours toward the success of their two major fundraising events, Wine and Roses and More and the Pine Forest Antique, Home Décor and Garden Show. Each event had a few new features added that boosted attendance and participation. In addition, TLWC could not attain these results without the support of these events by numerous businesses in Tri-Lakes and beyond. Many thanks to a great community.

Gardeners wanted for Community Garden

The community garden is located in Monument's Lavelett Park on Beacon Lite Road. One garden bed is available to a gardener for personal use. The other bed's harvest will be donated to Tri-Lakes Cares as it has for the last two years. Help is needed with planting, maintaining, and harvesting that bed. Also needed are donations for the purchase of short-season seeds for the Tri-Lakes Cares bed. For more information, contact Leah Squires, 488-5902,

leahssquires@gmail.com; or Carol Crossland, 661-1476, cdcland@yahoo.com.

CSU Extension seeks public input

Colorado State University Extension is conducting a survey to identify the education needs of vegetable gardeners in the Pikes Peak region. All El Paso County residents are invited to participate in a short 10-question survey. To respond, please type the following URL into the address box of your search engine: <https://www.surveymonkey.com/s/BCSMFVJ>. No personal or contact information is required.

Gardener Help Desk Summer Hours

Colorado Master Gardener (CMG) volunteers are ready to assist you with your lawn and gardening questions. CMG volunteers are available at the Colorado State University Extension office Monday through Friday mornings 9 a.m.-noon. You may call and leave a message at any time at 520-7684, or email your questions to CSUm2@elpasoco.com. ■

4th Networking4CF Golf Tournament



Saturday, June 22
Glen Eagle Golf Club
1:00 pm Shotgun Start
Dinner, Prizes, Silent Auction

www.networking4cf.com or (719) 459-7696
Golfers, Sponsors, Donations, Volunteers

Lightning Electric

For ALL Your Electrical Needs
Residential • Commercial • Industrial
Service Calls • Reasonable Rates • Free Estimates
Fully Insured & Licensed
Master Electricians

David Lambert
(719) 243-2257

Keith Profita
(719) 243-2258

Terrie Spells

Tri-Lakes' professional color specialist

719-487-8660

Located at Monumental Styles

Knowing your hair is my business



Are you growing out of your home office or need a part-time space to work? Contact us today!



- Office space with flexible leases
- Part-time cubicle rental
- Conference room with kitchen, day office rental & gazebo rental
- Affordable; beginning at \$150/month

Ample parking
Quiet setting
Utilities included
Easy access off I-25 in Monument

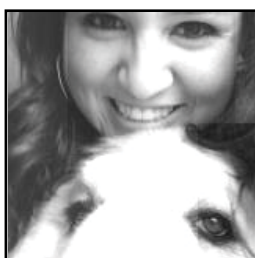
www.woodcarverproperties.com
info@woodcarverproperties.com, Cherith 719-481-4877 x100

PRESCOTT'S WAYGU BEEF FOR SALE Spring Special!

Sensational Hamburger Package
WAYGU, all-natural, grass-fed hamburger patties.

Forty eight -1/3 lb patties per box, 16 lbs, Net
Off season Price only
\$124.95

prescottranchbeef.com
Prescott Ranches LLC
(719) 541-5024



Angelina Marie Sicola, 20, of Palmer Lake

Passed away on May 1, 2013. She was born in Colorado Springs to Stephen Sicola and Pamela Lively of Palmer Lake. Angelina graduated from Palmer Ridge High School in 2011 as a member of the first graduating class and was a Dean's List student at the

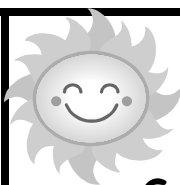
University of Colorado at Colorado Springs. She was a dedicated Taekwondo student and assistant instructor with a first degree black belt. A proud vegetarian, Angelina had always displayed kind-heartedness and compassion toward animals. Smart, savvy, and confident with a razor-sharp sense of humor, she constantly charmed those around her. Angelina cherished her independence, but also loved the company of those close to her. Surviving family members are comforted knowing she is now with her grandma Shirley, baking cookies and trading jokes.

Angelina is survived by her loving parents, Stephen Sicola of Palmer Lake, and Pamela Lively and Don Mathews of Palmer Lake, sister, Amber Sicola and future brother-in-law Shane Pinchock, great-grandmother Myra Williams, grandmother Virginia Cain, cousin Dasia Lively, step-mother Jane Boyer, step-siblings Susan Biondo Shelters, Kenzie Mathews, and David Biondo. She is also survived by her two beloved Great Pyrenees, Nanna and Bandit, Aunts and Uncles Jan Lively, Bret Lively, Mike and Valerie Sicola, Charlie and Alice Sicola, and many cousins. Angelina was preceded in death by fraternal grandparents Shirley and Vincent Sicola and maternal grandfather Fred Smith.

A memorial service was held Wednesday, May 8, 11:00AM at New Life Church, 11025 Voyager Pkwy, Colorado Springs. In lieu of flowers, the family asks that well-wishers make a charitable donation in Angelina's name to the Great Pyrenees Rescue & Sanctuary, 13990 Windy Pine Drive, Elbert, CO 80106 or to the Angelina Sicola Memorial Scholarship Fund, P.O. Box 1603, Palmer Lake, CO 80133.

LOST—CAMERA

Red SONY Cyber-shot camera in black case. Pictures have sentimental value.
REWARD OFFERED (719) 574-3885



Monument Hill Farmers Market

Saturdays 8 am-1 pm

Behind the D-38 Administration Building at Second and Jefferson St. in Downtown Monument. Park in the administration building parking lot.

Playground for the kids! Many new vendors plus all your old favorites!

For information, call 592-9420.